



Five bedroom family home in the sough after Netherne Village

exclusive to

SAUNDERS

richardsaunders.co.uk

Netherne Drive Coulsdon CR5

Coulsdon 2.9 miles
Coulsdon South Station 2.9 miles
London by Rail 45 minutes
M25 (J8 Reigate): 3.1 miles

All times and distances are approximate

New to market this well presented five bedroom, four bathroom family home set in the heart of Netherne Village. The property offers bright and spacious living throughout, spanning over 3,000 sq.ft. with plenty of additional storage. The local village has a convenience store, private leisure centre which includes an indoor swimming pool, sauna and gym. Additional benefits include: Three reception rooms, good sized rear enclosed garden, double garage and parking for multiple cars.

To Let £3,850pcm





Available Now | Five Bedroom | Four Bathrooms | Unfurnished | Driveway parking For Multiple Cars | Double Garage | Close To Coulsdon High Street

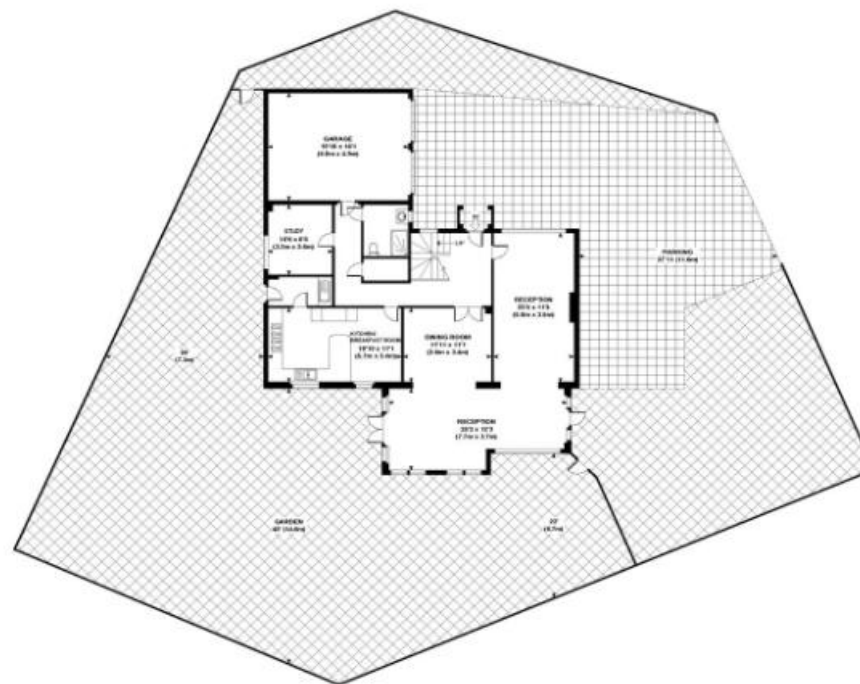


Score	Energy rating	Current	Potential
92+	A		
81-91	B		
69-80	C	72 C	76 C
55-68	D		
39-54	E		
21-38	F		
1-20	G		

Netherne Drive, CR5



FIRST FLOOR



GROUND FLOOR

IMPORTANT NOTICE TO PURCHASERS: We endeavour to make our sales particulars accurate and reliable, however, they do not constitute or form part of an offer or any contract and none is to be relied upon as statements of representation or fact. The services, systems and appliances listed in this specification have not been tested by us and no guarantees as to their operating ability or efficiency are given. All measurements have been taken as guide to prospective buyers only, and are not precise. If you require clarification or further information on any points, please contact us, especially if you are travelling some distance to view.

Viewing
Please call us to arrange
a viewing appointment

1 Waterhouse Lane
Kingswood
01737 360000

2 High Street
Banstead
01737 363333

Residential Lettings
All Areas
01737 370700

SAUNDERS
richardsaunders.co.uk